



UAS: Confluence of Things Spatial

14 September 2016 Jeffrey M. Young

Agenda for Today

- Thank You
- Exciting times
- Our Value, Standards and Certifications
- Position, Location and Place
- Geographies of responsibilities, interests and observation
- UAS Value Proposition
- UAS User Communities and Sectors Served
- Little Big Data

Jeff Young's Background

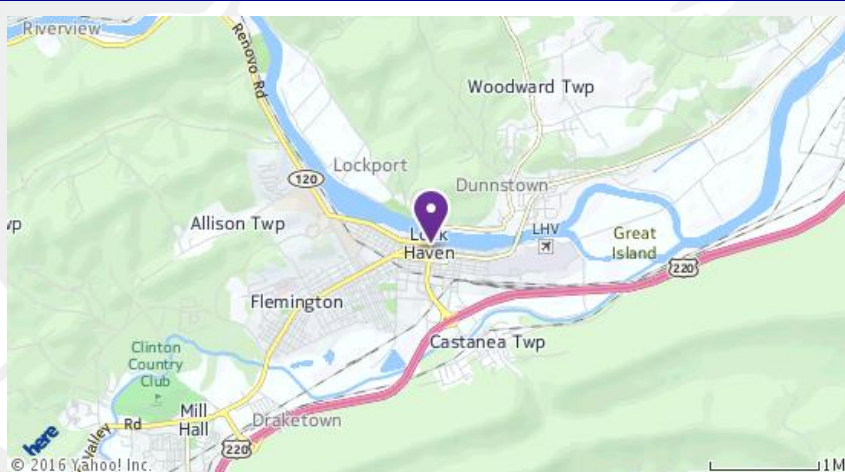
- Born in Scranton, Pennsylvania USA
- A blighted geography---king coal
- Practicing Geographer
 - Scientific Applications
 - AEC
 - Modeling
 - Site Selection
 - Data Quality Concerns
- Now Business Endeavors
- Living in Centennial, Colorado
- Rocky Mountain Region/Data Archiving and Preservation



Exciting times

- Geospatial
- Spatial
- Built Environment
- Borders, Boundaries, and Bounty
- Geographic Imperatives Before Us
- Best of Times

Geographies of



- Responsibilities – regulatory and financial
- Interests -- speculative
- Observation – personal interests

UAS Value Proposition

Mandates and initiatives

Current Response

Measures of success

Value – Better, Faster and Cost Sensitive

Technical Response

.....The Quick Eat the Slow

UAS User Communities and Sectors Served

National Government/National Security
Infrastructure
Energy
Regional and Local Government
Emerging Communities

UAS User Communities and Sectors Served

Municipalities

Metropolitan Area /County – MSAs,
State/ Province

Region/ Multi-State based on political or
physiographic boundaries

National

Multi National/Enterprise

Global

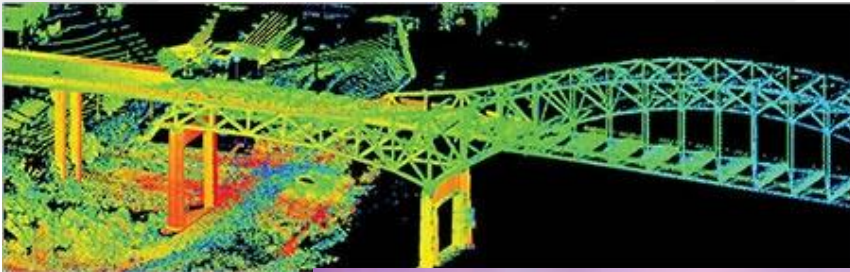
UAS User Communities and Sectors Served

National Government/National Security



UAS User Communities and Sectors Served

Infrastructure



UAS User Communities and Sectors Served

Energy



UAS User Communities and Sectors Served

Regional and Local Government



UAS User Communities and Sectors Served

Emerging Communities such as:

Heritage & Culture

Architecture, Construction & Real Estate

Broadcast & Media

Business & Financial Services

Education

Entertainment

.....



Little Big Data

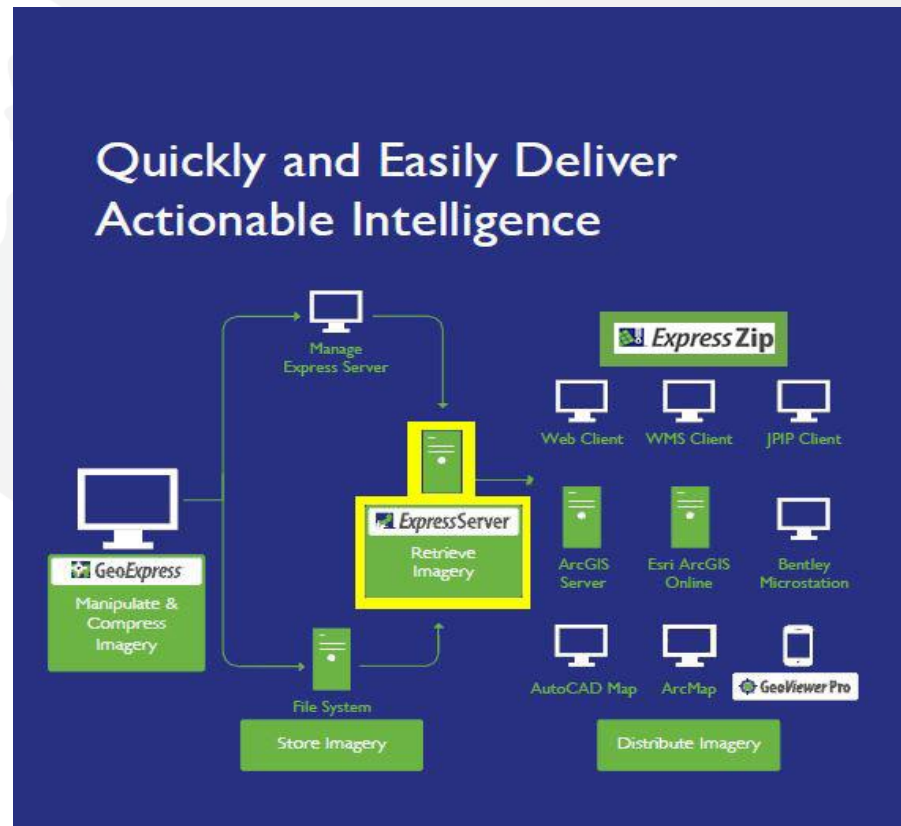
Image Asset Handling Platform

- Compress
- Manage
- Distribute
- Integrate
- Deploy



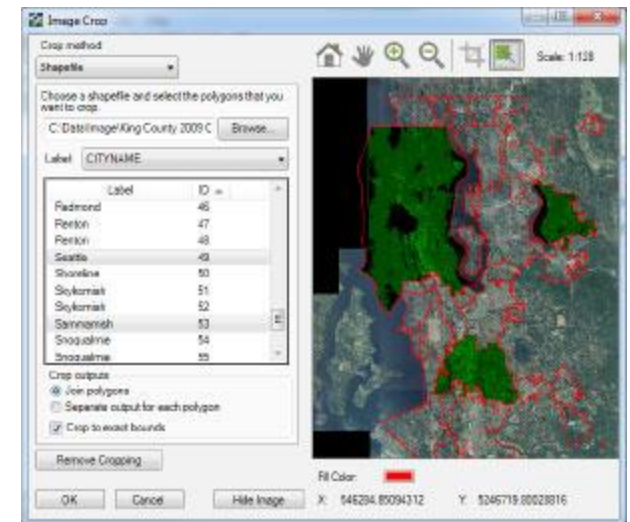
Image Asset Handling

- Compress
- Manage
- Distribute
- Integrate
- Deploy

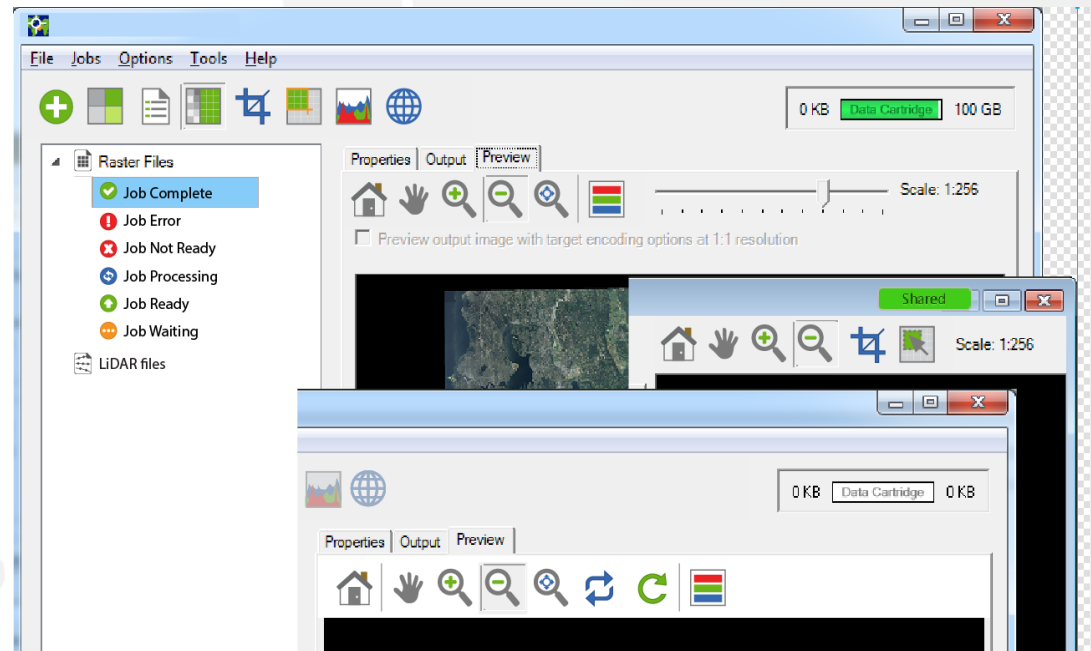


GeoExpress 9.5.1

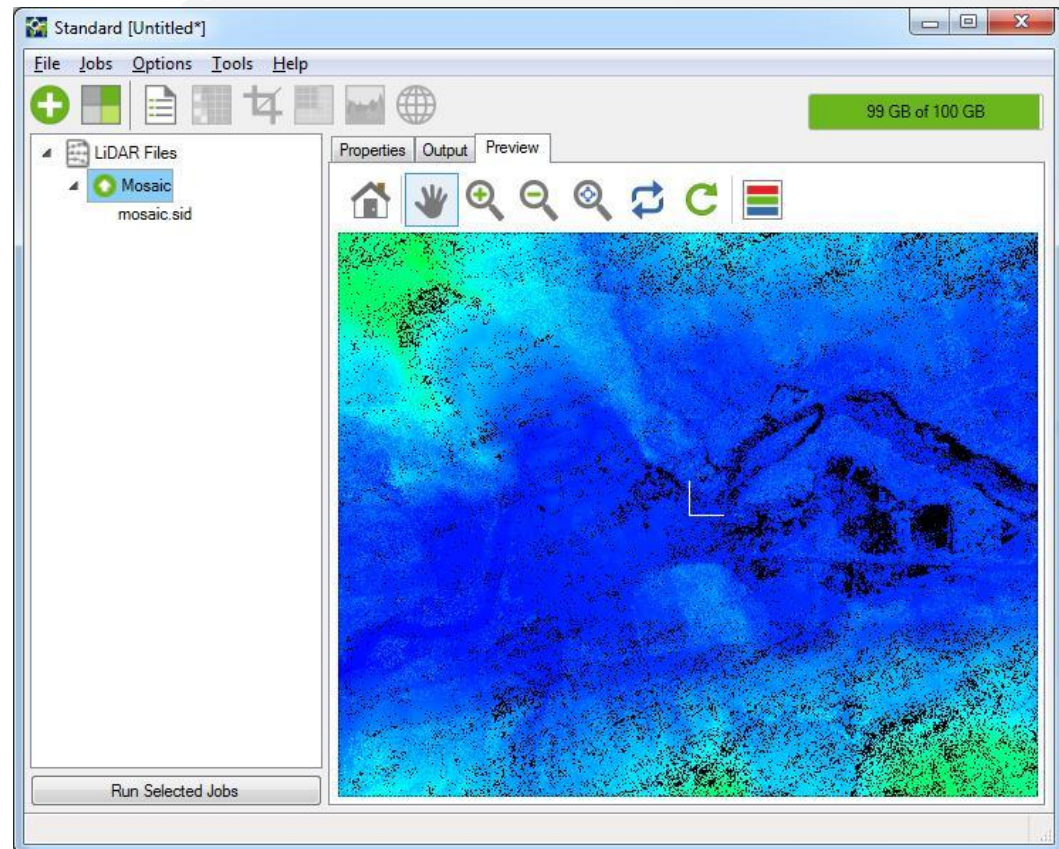
- *LiDAR data into high-quality MrSID and JPG2000*
- Reproject, crop, color balance, compile mosaics using an intuitive set of tools
- Intuitive User Interface (UI)
- Seamlessly Mosaic LiDAR files
- Image Asset Handling Workflows
- Support for .pix raster data



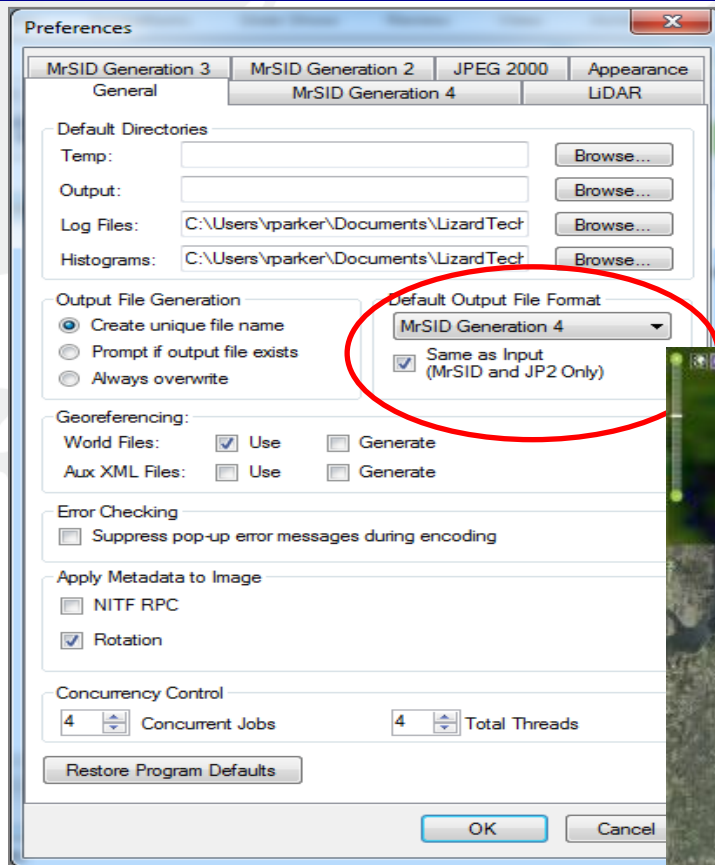
Intuitive User Interface (UI)




Mosaic LiDAR files



Workflows for Image Asset Handling



Express Server



Express Server

Fast and Simple Image Delivery From Any Device or Connection

OVERVIEW

Get the geospatial data you need, when and where you need it. Express Server uses patented compression technology to reduce storage costs, decrease image load times and handle thousands of Raster and LIDAR data requests without sacrificing quality.

Express Server BENEFITS

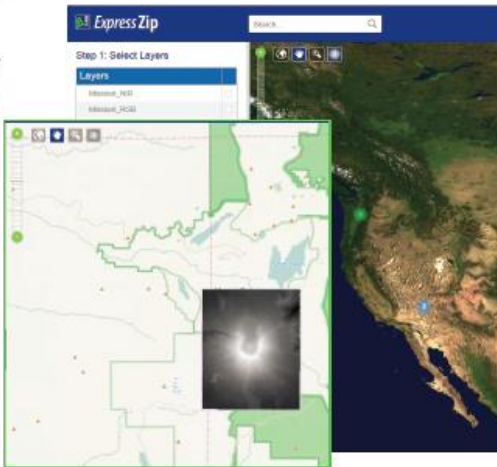
Full Featured. All Online.

Install and configure Express Server without ever touching the command line. Whether you're managing the server or just accessing raster and LIDAR point cloud data remotely, Express Server's full-featured web tools have you covered. Use the Express Server Manager to create image catalogs, browse files, restart the server and more.

Access Your Data Anywhere

Use any device on any connection to access your raster files and LIDAR point cloud data. Stream and view even massive LIDAR point cloud data files quickly and easily, with no time-consuming downloads. Plus, industry-standard protocols assure compatibility with virtually all GIS applications, so there's no special training.

WITH: **MG4** **Express Zip**



The screenshot shows the Express Zip web application. It features a search bar at the top, a 'Step 1: Select Layers' section with a list of layers (e.g., 'Mosaic_M01', 'Mosaic_M02'), and a map view on the right. A small inset window shows a 3D visualization of a data point.

Step 3: Configure Export Options

Job details

Format options

Packaging Format

ZIP

Raster

Output format

JPEG

LiDAR

Point Cloud Options

Output format

MrSID

Thinning factor

1.0

DEM Options

Output format

MrSID

Data type

FLOAT32

General LiDAR Options

Minimum Z

Maximum Z

Classifications

ground

low vegetation

unclassified

wire guard

Export resolution

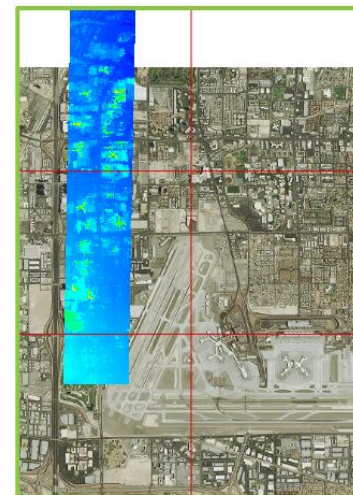
Back

Submit

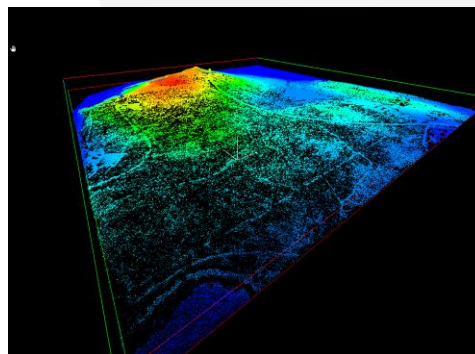
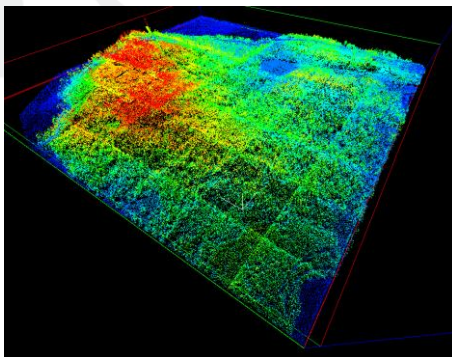
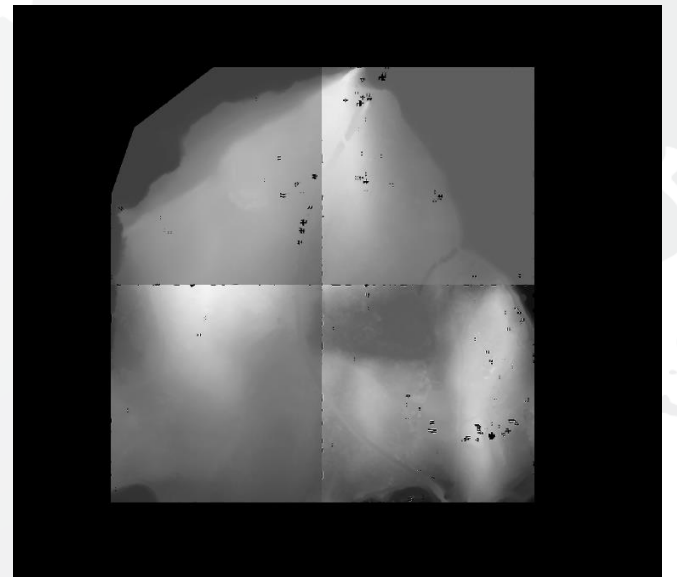
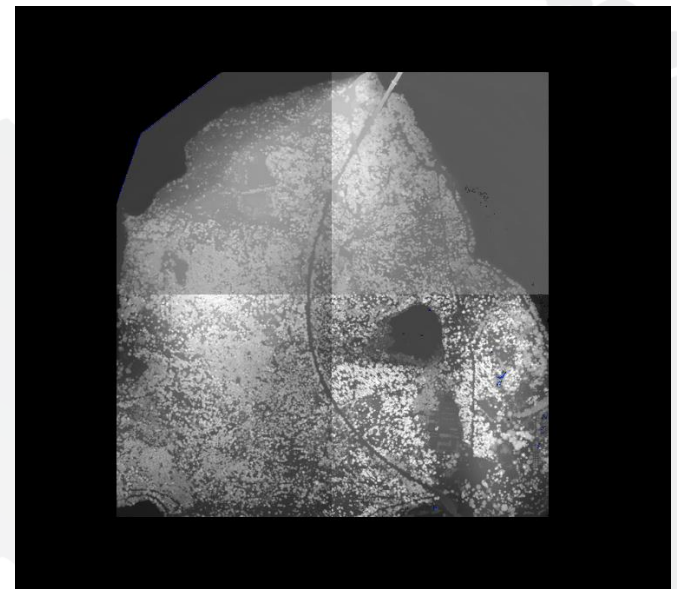
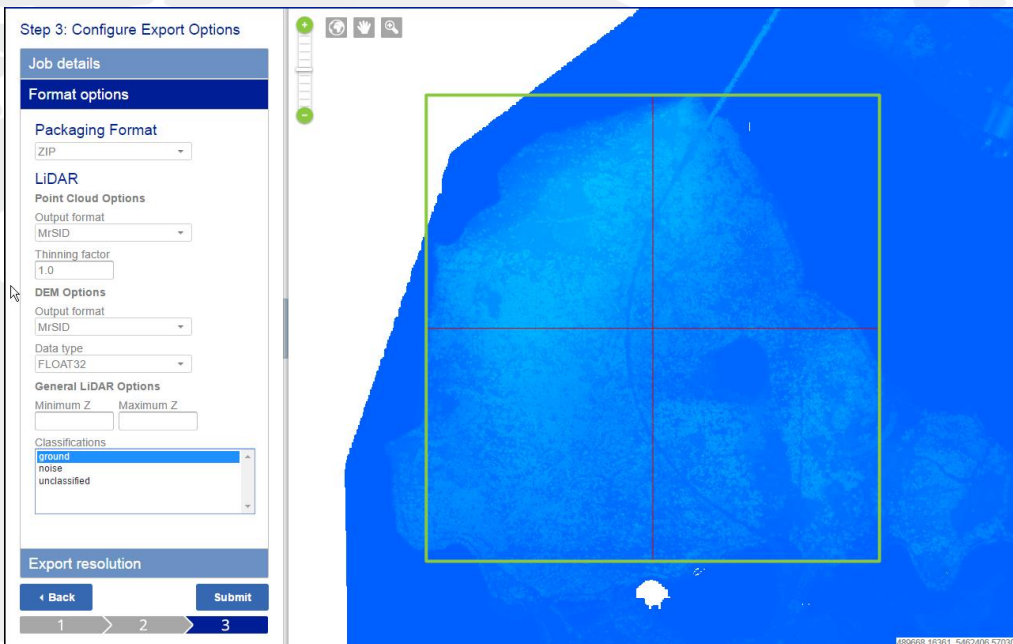
1

2

3

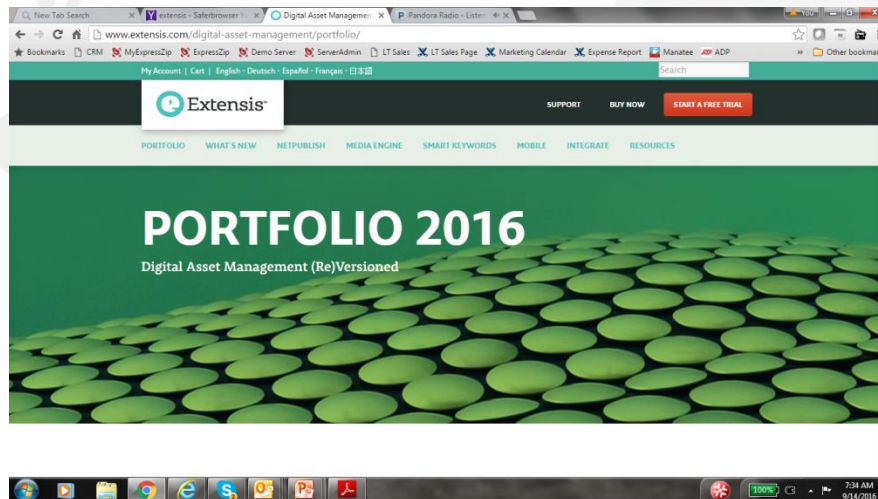


-115.21408, 36.16315



Portfolio

**MrSID technology support
360 Video Support**





UAS: Confluence of Things Spatial

14 September 2016 Jeffrey M. Young